

MEDTOX[®] SURE-SCREEN[®] cup

Quick Reference Guide

The device detects one or more of the following drug classes at or above the following concentrations:

Amphetamine (AMP)	300 ng/ml
Barbiturates (BAR)	200 ng/ml
Buprenorphine (BUP)	10 ng/ml
Benzodiazepines (BZO)	200 ng/ml
Cocaine (COC)	100 ng/ml
Methadone (MTD)	200 ng/ml
Methamphetamine (mAMP)	1000 ng/ml
Opiates (OPI)	100 ng/ml
Oxycodone (OXY)	100 ng/ml
Phencyclidine (PCP)	25 ng/ml
Propoxyphene (PPX)	300 ng/ml
Cannabinoids (THC)	40 ng/ml

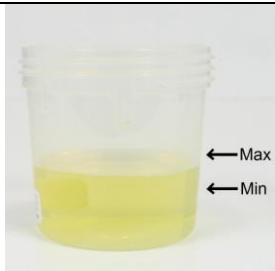
Drug screening tests for *in vitro* diagnostic use only.
In Canada, for Laboratory use only.

C = Control Line
T1 = Test Line for drug name on top portion
T2 = Test Line for drug name below
(if no print on lower color, then no T2 drug tested)

Bring pouched device to room temp (18-25°C / 64-77°F) before opening.



Instructions



Obtain urine. Urine level must be between the Min / Max lines on cup. If urine was refrigerated, bring to room temp and mix well before testing.



Screw lid onto cup -- **TIGHTEN FIRMLY.**
Tear open pouch and remove device. Align device and cup as shown.



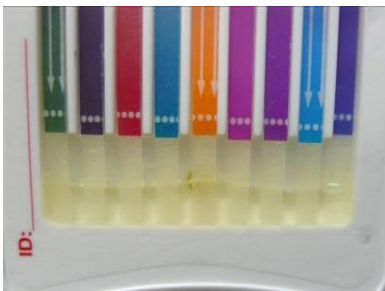
Place the device securely on to the lid---the parts should interlock easily and move freely clockwise.



Rotate the device clockwise ¼ of a turn (i.e. from 9 o'clock to 12 o'clock) until it snaps into place.



Place cup on its side as shown above to start urine flow.



Example Sufficient URINE Present --about ¼ inch *evenly distributed*-- is all that is needed for the device to migrate properly. More urine is NOT necessary! Allow test device to rest on its side undisturbed for 5 minutes.

If Adulterant strip (LFAS) is present, see Color Comparator Chart provided for read times and to interpret results. LFAS strip, if present, is for forensic/toxicology use only.

READING TEST RESULTS (5 Minutes)

Some strips have two (2) tests.

Strips with two tests are labeled with two colors on the strip.

The top color indicates the T1 test with drug 'test name=T1'.

Example T1 Tests = AMP, THC, BZO

The bottom color indicates the T2 test with 'test name=T2'. Example T2 Tests = COC, OPI

Strips with one test have one color and test results at T1 position only. Example BZO

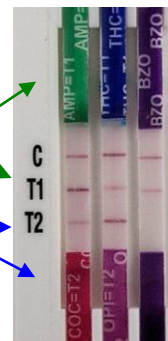
For examples at right, **C** = Control

VALID TEST:

A reddish-purple line must appear in the "C" area of the test strip for that test to be valid.

INVALID TEST:

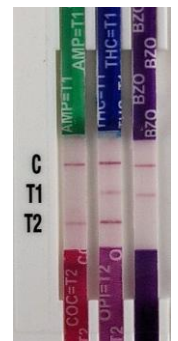
If no control line "C" is present on a test strip the test is invalid. Retest the urine with a new device.



NEGATIVE:

Any reddish-purple line visible at 5 min. in the test area is a negative result (even a faint or broken line).

Example above: All five test results are negative, the control lines are present, and the tests are valid.



PRELIMINARY POSITIVE:

The absence of a line in the test area is a preliminary positive result.

Example above: AMP (Amphetamine) test is a preliminary positive. All tests are valid.

Seal Properly if Transporting to Laboratory for confirmation:

- Tighten the lid
- Use dual seal provided with cup
 - Seal sample port
 - Seal vent hole



For complete product information refer to the **PACKAGE INSERTS** available at <http://www.medtox.com/ProductTraining.aspx>

or contact Technical Support at 1-877-643-5703.

SURE-SCREEN[®] Package INSERT Rev. 4/10a, P/N 101490.

BUP Package INSERT Rev 11/10, P/N 102232.

**MEDTOX Diagnostics, Inc. • 1238 Anthony Road
Burlington, NC 27215**

Phone: 1-877-457-0613 • Fax: 651-286-6222

E-mail: sales@medtox.com